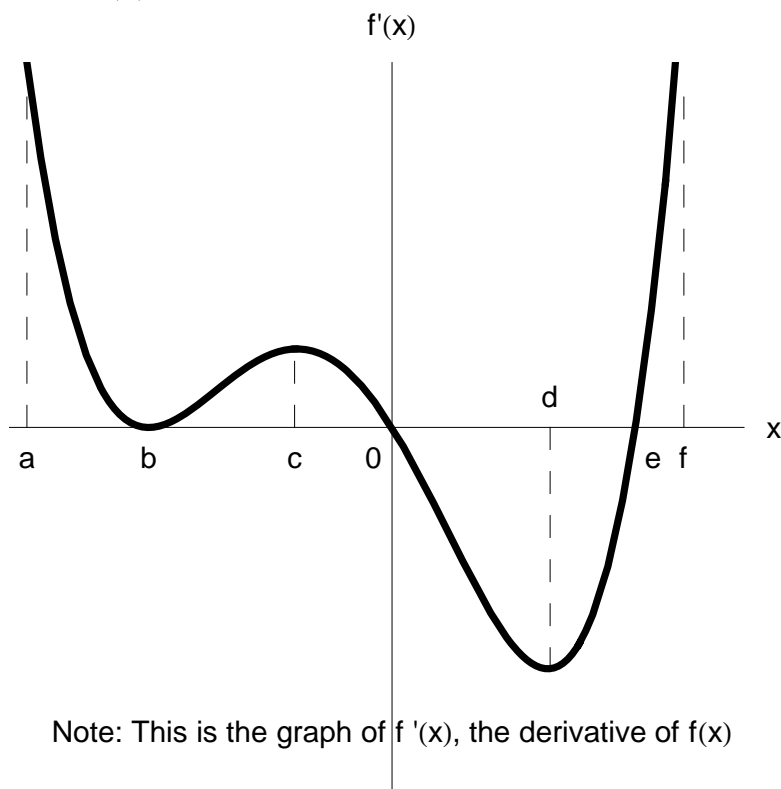


AP Calculus

Quiz: Derivative Graph

Let $y = f(x)$ be a continuous function defined on the interval (a, f) . The graph in the figure below is the graph of the derivative of $f(x)$. Use the graph to answer the following questions about $f(x)$.



Note: This is the graph of $f'(x)$, the derivative of $f(x)$

1. On what intervals is the graph of f increasing? Justify your answer.
2. On what intervals is the graph of f decreasing? Justify your answer.
3. At which x -values does f have a local maximum? A local minimum?

